



1 Duro Way
Walton, KY 41094
CREATED BY: B. Wallrawe
TECHNICAL:
Starting Web: 39 1/4" Finished Web 39.00"

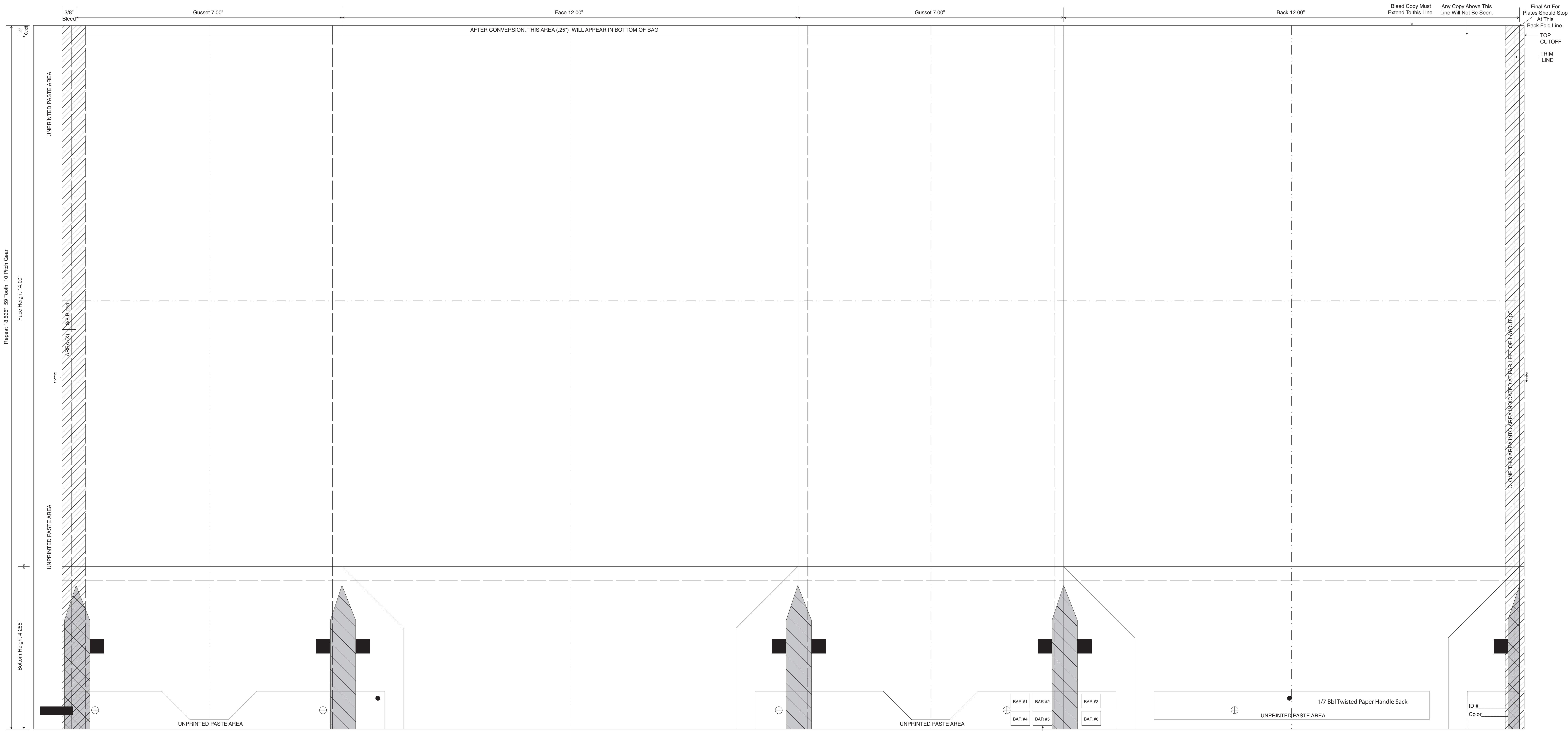
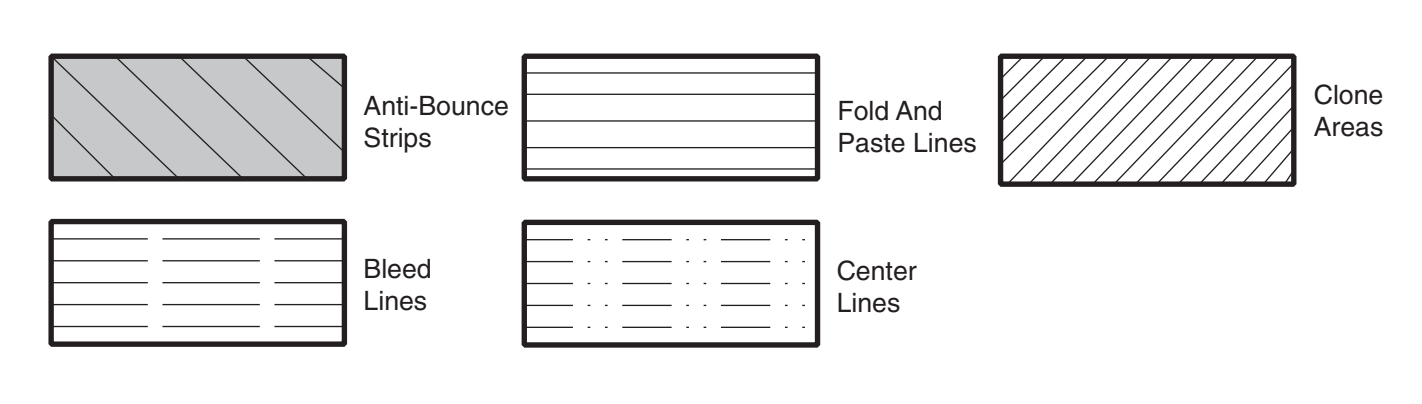
DESIGN GROUP:
Special Sak
**1/7 Bbl Twisted Paper
Handle Sack**
12 x 7 x 14
DATE: 1/23/07 SCALE: FULL

This .020" Microdot Is For Flexographic Printing Only. It Should Be Placed On Every Color At The Center Of Largest Copy (Top To Bottom). The Left Microdot Gets Placed 1/64" Inside The Paste Area. The Right Microdot Gets Placed 1/64" Outside The Right Side Back Fold Edge Line.

BORDER DESIGNS
Because Of Machine Movement In Bag Conversion, Copy Should Be Placed At Least 1/4" From Fold Lines Or Edges. In The Top Area, Use 1/2" Bleed. Border Designs Should Be Kept 1/2" From Fold Edges, Top Cutoff And Bottom Fold.

PLEASE NOTE: All Screen, Half-Tones And Process Jobs Must Be Reviewed By Duro's Graphic Printing Division Before Preparing Art.
This Proof is For Copy, Elements And Position Only. NOT FOR COLOR APPROVAL.

Fill All 5 Anti-Bounce Area With 40% Screen In All Colors Containing Screens
Full Panel Print Must Bleed Into Top & Bottom Panel Of Bag, Which Is Indicated On Template

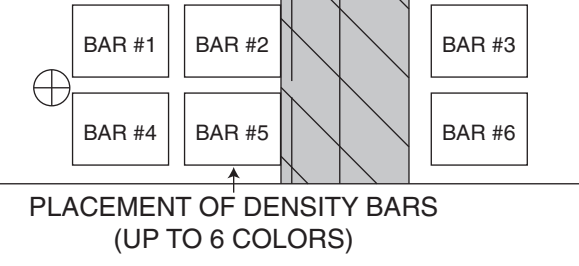


Repeat 18.535" 50 Tooth 10 Pitch Gear
Face Height 14.00"

Bottom Height 4.285"

CLONE THIS AREA INTO AREA INDICATED AT FAR LEFT OF LAYOUT (X)

Final Art For Plates Should Stop At This Back Fold Line.
TOP CUTOFF TRIM LINE



Cut Flap 8 3/4"
Printed Flap 9 3/4"
This Proof is For Copy, Elements And Position Only. NOT FOR COLOR APPROVAL.

1/7 Bbl Twisted Paper Handle Sack
UNPRINTED PASTE AREA

ID # _____
Color _____