

**.107 Distortion
Rate 97.08%**



DESIGN GROUP:
Rio Bravo Shopper Series

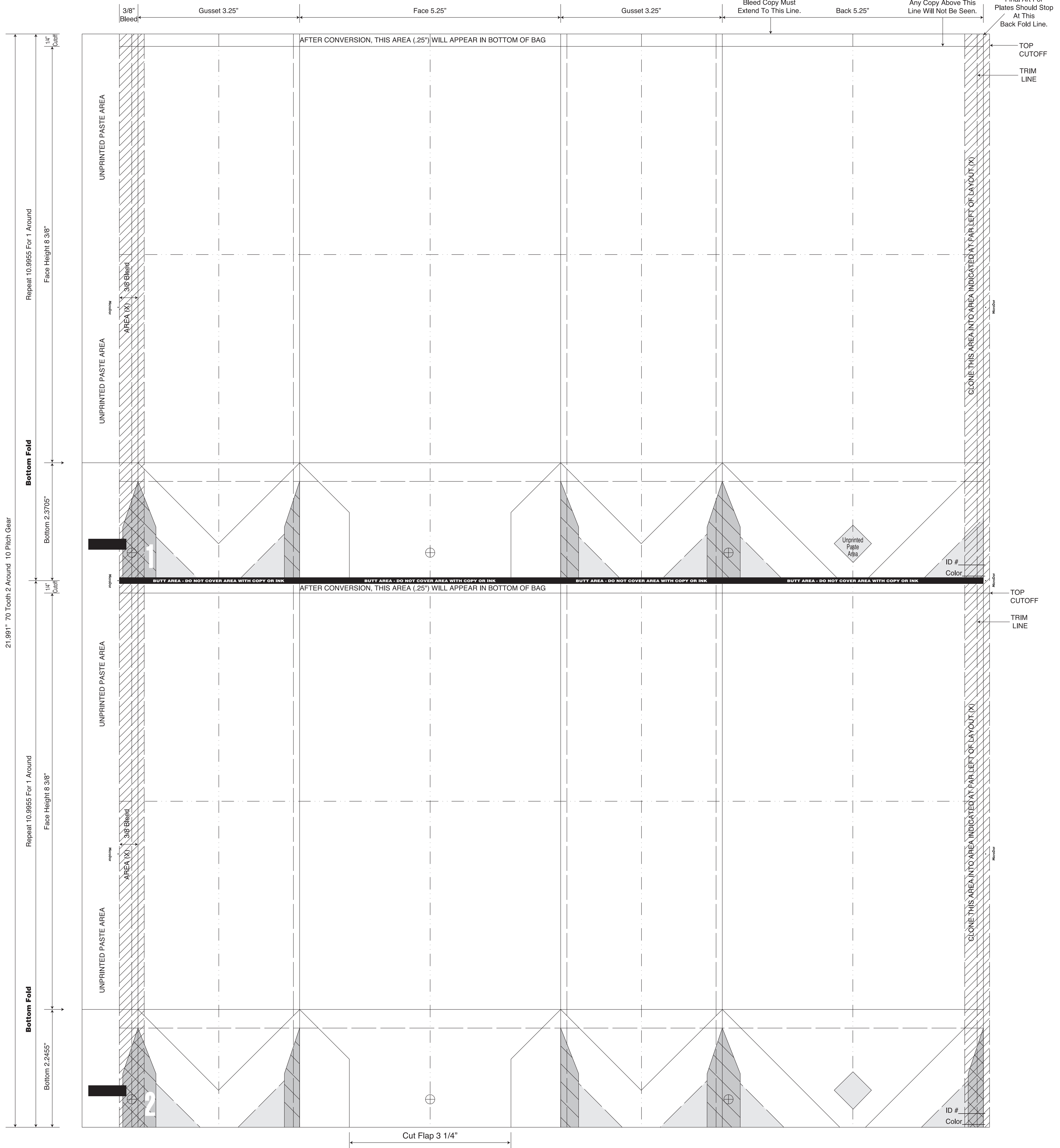
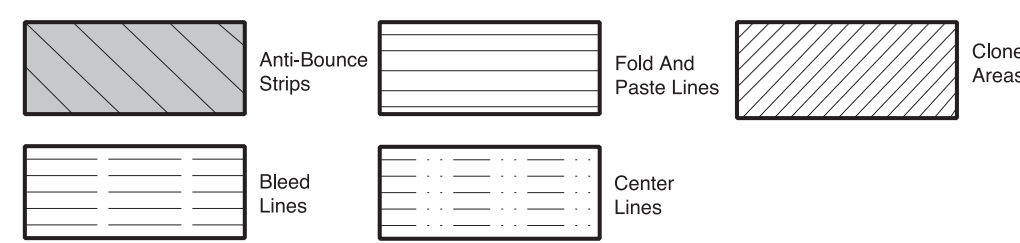
Custom Gem
5 1/4 x 3 1/4 x 8 3/8

DATE: 2/10/16 SCALE: FULL

PLEASE NOTE: This proof is for copy, content, and position approval only. This proof is not for actual color or paper substrate used to produce your order. Carefully check all traps (overlap of color) punctuation, spelling, copy and elements. Please use attached approval letter for signed approval. Approval letter, proof and ink roll outs must be returned to produce your order.

BORDER DESIGNS
Because Of Machine Movement In Bag Conversion, Copy Should Be Placed At Least 1/4" From Fold Lines Or Edges. In The Top Area, Use 1/2" Bleed. Border Designs Should Be Kept 1/2" From Fold Edges, Top Cutoff And Bottom Fold.
Full Panel Print Must Bleed Into Top & Bottom Of Bag. Which Is Indicated On Template

Fill All 5 Anti-Bounce Area With 40% Screen In All Colors Containing Screens



UNPRINTED PASTE AREA

UNPRINTED PASTE AREA

UNPRINTED PASTE AREA

UNPRINTED PASTE AREA

AFTER CONVERSION, THIS AREA (.25") WILL APPEAR IN BOTTOM OF BAG

AFTER CONVERSION, THIS AREA (.25") WILL APPEAR IN BOTTOM OF BAG

Final Art For Plates Should Stop At This Back Fold Line.
TOP CUTOFF
TRIM LINE

TOP CUTOFF
TRIM LINE

CLONE THIS AREA INTO AREA INDICATED AT FAR LEFT OF LAYOUT (X)

CLONE THIS AREA INTO AREA INDICATED AT FAR LEFT OF LAYOUT (X)

AREA (X)

AREA (Y)

Unprinted Paste Area

ID #
Color

ID #
Color

Cut Flap 3 1/4"

Repeat 10.9955 For 1 Around
Face Height 8 3/8"

Repeat 10.9955 For 1 Around
Face Height 8 3/8"

Bottom Fold

Bottom Fold

21.991" 70 Tooth 2 Around 10 Pitch Gear

3/8" Bleed

3/8" Bleed

3/8" Bleed

3/8" Bleed

3/8" Bleed

1/4" Cutoff

1/4" Cutoff

1/4" Cutoff

Bottom 2.3705"

Bottom 2.2455"

Gusset 3.25"

Gusset 3.25"

Face 5.25"

Face 5.25"

Back 5.25"

Back 5.25"

Bleed Copy Must Extend To This Line.

Any Copy Above This Line Will Not Be Seen.