

Distortion Rate For Pre Print Plates For .107 Is 97.24%

Distortion Rate For Tail Print Plates For .067 Is 98.32%

DURO BAG
 A NOVOLUX BRAND
 11 Duro Way
 Walton, KY 41094
 Duro.ArtDepartment@novolux.com
 CREATED BY: B. Wallrawe
 TECHNICAL
 Starting Web: 51 1/4" Finished Web 51.00"

DESIGN GROUP:
Rio Bravo Shopper Series

Knotless Macrame
Jr Cargo
18 x 7 x 17

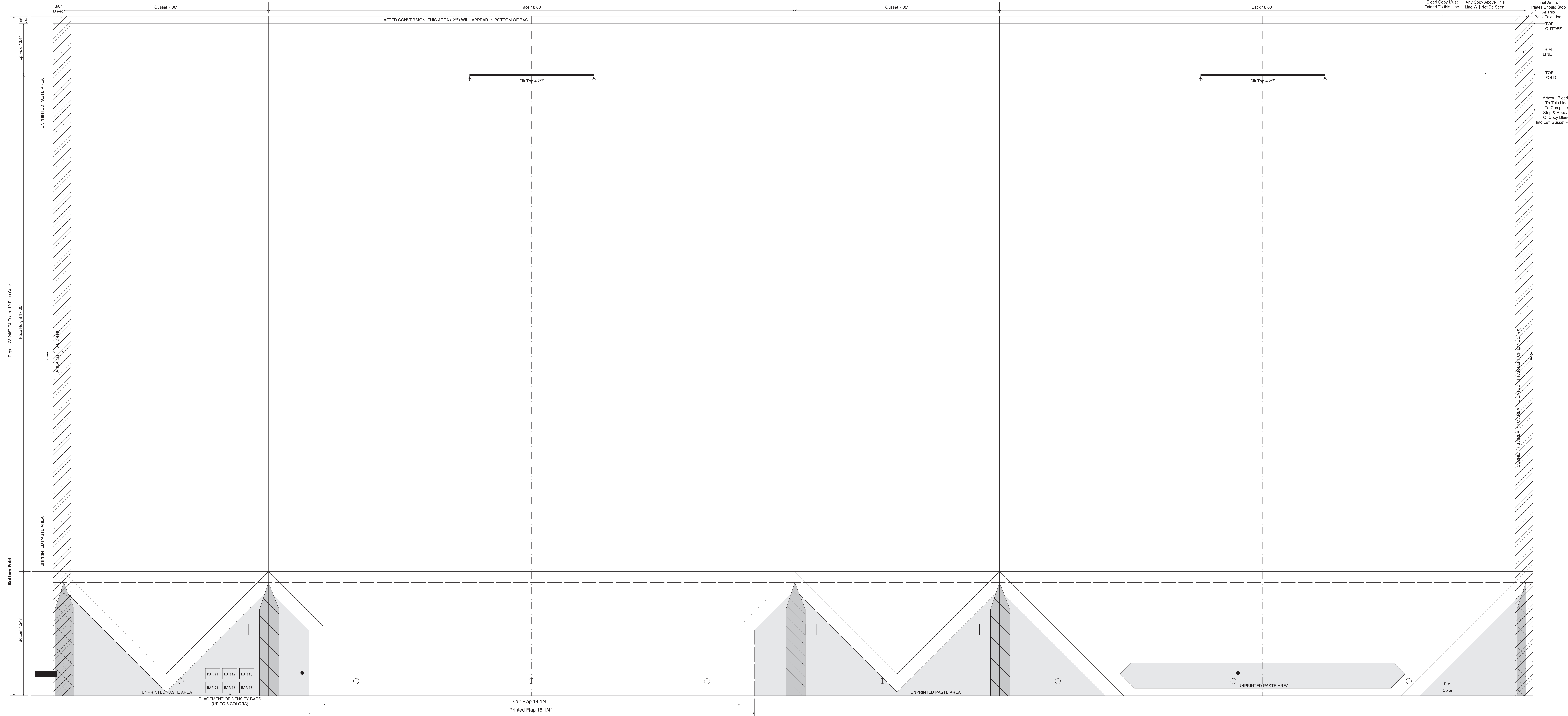
DATE: 2/10/16 SCALE: FULL

PLEASE NOTE: This proof is for copy, content, and position approval only. This proof is not for actual color or paper substrate used to produce your order. Carefully check all traps (overlap of color) punctuation, spelling, copy and elements. Please use attached approval letter for signed approval. Approval letter, proof and ink roll outs must be returned to produce your order.

BORDER DESIGNS
 Because Of Machine Movement In Bag Conversion, Copy Should Be Placed At Least 1/4" From Fold Lines Or Edges. In The Top Area, Use 1/2" Bleed. Border Designs Should Be Kept 1/2" From Fold Edges, Top Cutoff And Bottom Fold.

Full Panel Print Must Bleed Into Top & Bottom Of Bag, Which Is Indicated On Template

Fill All 5 Anti-Bounce Area With 49% Screen In All Colors Containing Screens



Repeat 23.248" 74 Tooth 10 Pitch Gear
 Floor Height 17.00"
 Bottom 4.248"
 Bottom Fold
 UNPRINTED PASTE AREA

Final Art For Plates Should Stop At This Back Fold Line.
 TOP CUTOFF
 TRIM LINE
 TOP FOLD
 Artwork Bleeds To This Line To Complete Step & Repeat Of Copy Bleed Into Left Gusset Panel.
 Bleed Copy Must Extend To This Line.
 Any Copy Above This Line Will Not Be Seen.
 Clone This Area Into Area Indicated At Far Left Of Layout (X)

BAR #1 BAR #2 BAR #3
 BAR #4 BAR #5 BAR #6
 UNPRINTED PASTE AREA
 PLACEMENT OF DENSITY BARS (UP TO 6 COLORS)

Cut Flap 14 1/4"
 Printed Flap 15 1/4"

ID # _____
 Color _____